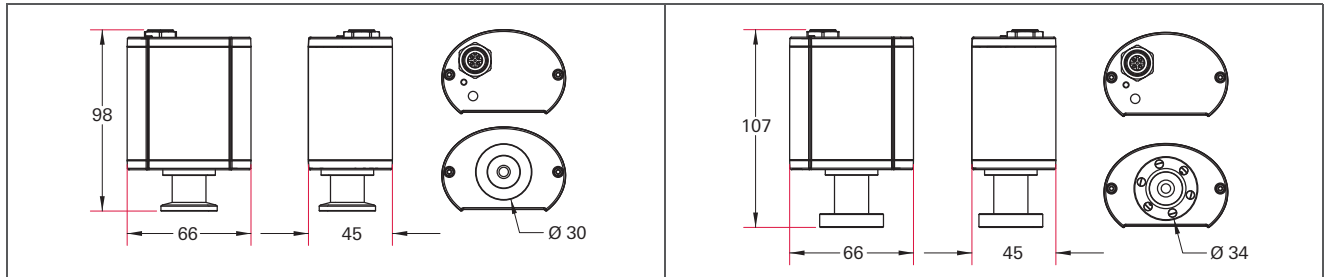


Pirani Gauge PPT 200 (1 · 10⁻⁴ – 1000 hPa)



- 1 · 10⁻⁴ to 1000 hPa
- High protection level for industrial applications
- Pulsed sensor for improved accuracy
- Profibus DP Interface (optional)
- DeviceNet Interface (optional)
- Analog output and set points (optional)

Dimensions (in mm)



PPT 200, DN 16 ISO-KF

PPT 200, DN 16 CF-F

Technical data	PPT 200, DN 16 ISO-KF, RS-485	PPT 200, DN 16 ISO-KF, RS-485, analog	PPT 200, DN 16 ISO-KF, RS-485, Profibus	PPT 200, DN 16 ISO-KF, RS-485, DeviceNet
Flange (in)	DN 16 ISO-KF	DN 16 ISO-KF	DN 16 ISO-KF	DN 16 ISO-KF
Seal	Metal	Metal	Metal	Metal
Pressure max.	400 kPa	400 kPa	400 kPa	400 kPa
Accuracy: % of measurement	< 2 · 10 ⁻³ hPa: < factor 2, 2 · 10 ⁻³ - 20 hPa: ± 10 %, 20 - 1000 hPa: ± 30 %	< 2 · 10 ⁻³ hPa: < factor 2, 2 · 10 ⁻³ - 20 hPa: ± 10 %, 20 - 1000 hPa: ± 30 %	< 2 · 10 ⁻³ hPa: < factor 2, 2 · 10 ⁻³ - 20 hPa: ± 10 %, 20 - 1000 hPa: ± 30 %	< 2 · 10 ⁻³ hPa: < factor 2, 2 · 10 ⁻³ - 20 hPa: ± 10 %, 20 - 1000 hPa: ± 30 %
Weight	190 g	190 g	190 g	190 g
Materials in contact with media	Tungsten, stainless steel, glass	Tungsten, stainless steel, glass	Tungsten, stainless steel, glass	Tungsten, stainless steel, glass
Measurement range max.	1000 hPa	1000 hPa	1000 hPa	1000 hPa
Measurement range min.	1 · 10 ⁻⁴ hPa	1 · 10 ⁻⁴ hPa	1 · 10 ⁻⁴ hPa	1 · 10 ⁻⁴ hPa
Sensor cable length max.	100 m	100 m	100 m	100 m
Method of measurement	Pirani	Pirani	Pirani	Pirani
Measuring cycle	10 ms	10 ms	10 ms	10 ms
Interface: Connection	Digital RS-485 ; M12, 5-pole	Digital RS-485 ; M12, 5-pole; Analog 0-10 V; 2 SP; M12, 8-pole	Digital RS-485 , M12, 5-pole, Profibus DP, M12, 5-pole	Digital RS-485 , M12, 5-pole, DeviceNet, M12, 5-pole
Protection category	IP 54	IP 54	IP 54	IP 54
Temperature: Bakeout	125 °C	125 °C	125 °C	125 °C
Temperature: Operating	+5 - +60 °C	+5 - +60 °C	+5 - +60 °C	+5 - +60 °C
Temperature: Storage	-40...+65 °C	-40...+70 °C	-40...+70 °C	-40...+70 °C
Supply: Voltage	24 V DC	24 V DC	24 V DC	24 V DC
Supply: Power consumption max.	2.5 W	3.2 W	4.0 W	2.9 W
Repeatability: % of measurement	2 · 10 ⁻³ - 10 hPa: ± 2 %	2 · 10 ⁻³ - 10 hPa: ± 2 %	2 · 10 ⁻³ - 10 hPa: ± 2 %	2 · 10 ⁻³ - 10 hPa: ± 2 %

Order number				
PPT 200, DN 16 ISO-KF	PT R38 130	PT R38 131	PT R38 132	PT R38 133

Accessories				
Centering ring with poral filter, Pore size: 20 µm, FPM/stainless steel, DN 16 ISO-KF	PF 117 216 -T	PF 117 216 -T	PF 117 216 -T	PF 117 216 -T
Fine filter, pore size 4 µm, DN 16 ISO-KF	PT 120 132 -T	PT 120 132 -T	PT 120 132 -T	PT 120 132 -T

Further accessories see controller DPG 202

Technical data	PPT 200, DN 16 CF-F, RS-485	PPT 200, DN 16 CF-F, RS-485, analog	PPT 200, DN 16 CF-F, RS-485, Profibus	PPT 200, DN 16 CF-F, RS-485, DeviceNet
Flange (in)	DN 16 CF-F	DN 16 CF-F	DN 16 CF-F	DN 16 CF-F
Seal	Metal	Metal	Metal	Metal
Pressure max.	400 kPa	400 kPa	400 kPa	400 kPa
Accuracy: % of measurement	< 2 · 10 ⁻³ hPa: < factor 2, 2 · 10 ⁻³ - 20 hPa: ± 10 %, 20 - 1000 hPa: ± 30 %	< 2 · 10 ⁻³ hPa: < factor 2, 2 · 10 ⁻³ - 20 hPa: ± 10 %, 20 - 1000 hPa: ± 30 %	< 2 · 10 ⁻³ hPa: < factor 2, 2 · 10 ⁻³ - 20 hPa: ± 10 %, 20 - 1000 hPa: ± 30 %	< 2 · 10 ⁻³ hPa: < factor 2, 2 · 10 ⁻³ - 20 hPa: ± 10 %, 20 - 1000 hPa: ± 30 %
Weight	220 g	220 g	220 g	220 g
Materials in contact with media	Tungsten, stainless steel, glass	Tungsten, stainless steel, glass	Tungsten, stainless steel, glass	Tungsten, stainless steel, glass
Measurement range max.	1000 hPa	1000 hPa	1000 hPa	1000 hPa
Measurement range min.	1 · 10 ⁻⁴ hPa	1 · 10 ⁻⁴ hPa	1 · 10 ⁻⁴ hPa	1 · 10 ⁻⁴ hPa
Sensor cable length max.	100 m	100 m	100 m	100 m
Method of measurement	Pirani	Pirani	Pirani	Pirani
Measuring cycle	10 ms	10 ms	10 ms	10 ms
Interface: Connection	Digital RS-485 ; M12, 5-pole	Digital RS-485 ; M12, 5-pole; Analog 0-10 V; 2 SP; M12, 8-pole	Digital RS-485 , M12, 5-pole, Profibus DP, M12, 5-pole	Digital RS-485 , M12, 5-pole, DeviceNet, M12, 5-pole
Protection category	IP 54	IP 54	IP 54	IP 54
Temperature: Bakeout	125 °C	125 °C	125 °C	125 °C
Temperature: Operating	+5 - +60 °C	+5 - +60 °C	+5 - +60 °C	+5 - +60 °C
Temperature: Storage	-40...+70 °C	-40...+70 °C	-40...+70 °C	-40...+70 °C
Supply: Voltage	24 V DC	24 V DC	24 V DC	24 V DC
Supply: Power consumption max.	2.5 W	3.2 W	4.0 W	2.9 W
Repeatability: % of measurement	2 · 10 ⁻³ - 10 hPa: ± 2 %	2 · 10 ⁻³ - 10 hPa: ± 2 %	2 · 10 ⁻³ - 10 hPa: ± 2 %	2 · 10 ⁻³ - 10 hPa: ± 2 %

Order number				
PPT 200, DN 16 CF-F	PT R38 310	PT R38 311	PT R38 312	PT R38 313

Further accessories see controller DPG 202