



# IMG 400, hot cathode measuring and control unit

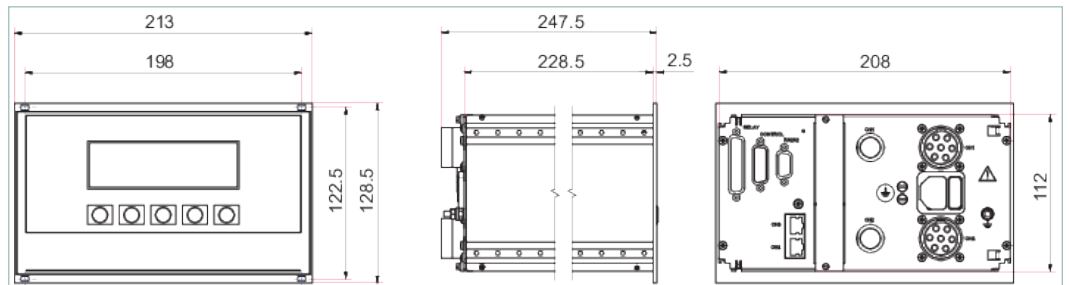


Similar Image

## IMG 400, hot cathode measuring and control unit

- Total pressure measurement and control in the UHV range
- For the operation of a Bayard-Alpert gauge IMR 420 or extractor gauge IMR 430
- Two IMR gauges can be connected simultaneously with automatic switching (backup operation)
- In addition, two ActiveLine Pirani and/or capacitive gauges can be connected
- Pressure display as numerical value, bargraph and pressure over time
- Switching the emission on and off is also possible via remote
- Relay outputs for measuring channel, emission, degas, channel and trigger
- Automatic emission current cut-off
- Can be used as table top or as rack mount unit
- Slot for optional Profibus interface card IF 400 P

### Dimensions



| Technical Data                                | IMG 400, hot cathode measuring and control unit |
|---|---|
| Ambient temperature                           | 5-40 °C   41-104 °F   278-313 K                 |
| Display rate                                  | 4 Hz  |
| For gauge                                     | IMR 420   IMR 430, TPR 270   TPR 280, CMR 36x   |
| I/O interfaces                                | RS-232  |
| Input: Digital (number)                       | 2 Pcs.  |
| Input: Digital (type)                         | TTL   |
| Mains requirement: frequency (range)          | 47/63 Hz  |
| Mains requirement: power consumption          | 300 W   |
| Mains requirement: voltage (range)            | 90 – 264 V AC                                   |
| Measurement range                             | $2 \cdot 10^{-12} - 1.1 \cdot 10^3$ hPa         |
| Measuring channel                             | 3 Pcs.  |
| Output signal: Measurement range              | 0 – 10 V  |
| Power consumption max.                        | 300 W   |
| Protection category                           | IP20  |
| Set point: Changeover contact, potential-free | 2 Pcs.  |
| Set point: Current AC                         | 0.5 A   |
| Set point: Voltage AC                         | 50 V AC   |
| Set point number                              | 2 Pcs.  |
| Temperature: Storage                          | -20-60 °C   -4-140 °F   253-333 K               |
| Usage   | IMR 420   IMR 430   2x ActiveLine               |
| Weight  | 3 kg   6.61 lb                                  |

### Order number

IMG 400

**PT G25 400**

| <b>Accessories</b>                                      |                      |
|---|----------------------|
| <b>Cables Measurement cables</b>                        |                      |
| Measurement Cable IMG 400 for IMR 420 and IMR 430, 3 m  | <b>PT 548 342 -T</b> |
| Measurement Cable IMG 400 for IMR 420 and IMR 430, 5 m  | <b>PT 548 343 -T</b> |
| Measurement Cable IMG 400 for IMR 420 and IMR 430, 10 m | <b>PT 548 344 -T</b> |
| Measurement Cable IMG 400 for IMR 420 and IMR 430, 50 m | <b>PT 548 348 -T</b> |
| <b>Control Devices Interface cards</b>                  |                      |
| Relay- and interface card IF 400 P                      | <b>PT 441 495 -T</b> |
| <b>Mounting Blank panels</b>                            |                      |
| Blanking Panel, for IF 300                              | <b>PT 441 017</b>    |

## **VACUUM SOLUTIONS FROM A SINGLE SOURCE**

Pfeiffer Vacuum stands for innovative and custom vacuum solutions worldwide, technological perfection, competent advice and reliable service.

## **COMPLETE RANGE OF PRODUCTS**

From a single component to complex systems:

We are the only supplier of vacuum technology that provides a complete product portfolio.

## **COMPETENCE IN THEORY AND PRACTICE**

Benefit from our know-how and our portfolio of training opportunities!

We support you with your plant layout and provide first-class on-site service worldwide.

Are you looking for a  
perfect vacuum solution?  
Please contact us:

**Pfeiffer Vacuum GmbH**  
Headquarters · Germany  
T +49 6441 802-0  
info@pfeiffer-vacuum.de

[www.pfeiffer-vacuum.com](http://www.pfeiffer-vacuum.com)

All data subject to change without prior notice.

**PFEIFFER**  **VACUUM**